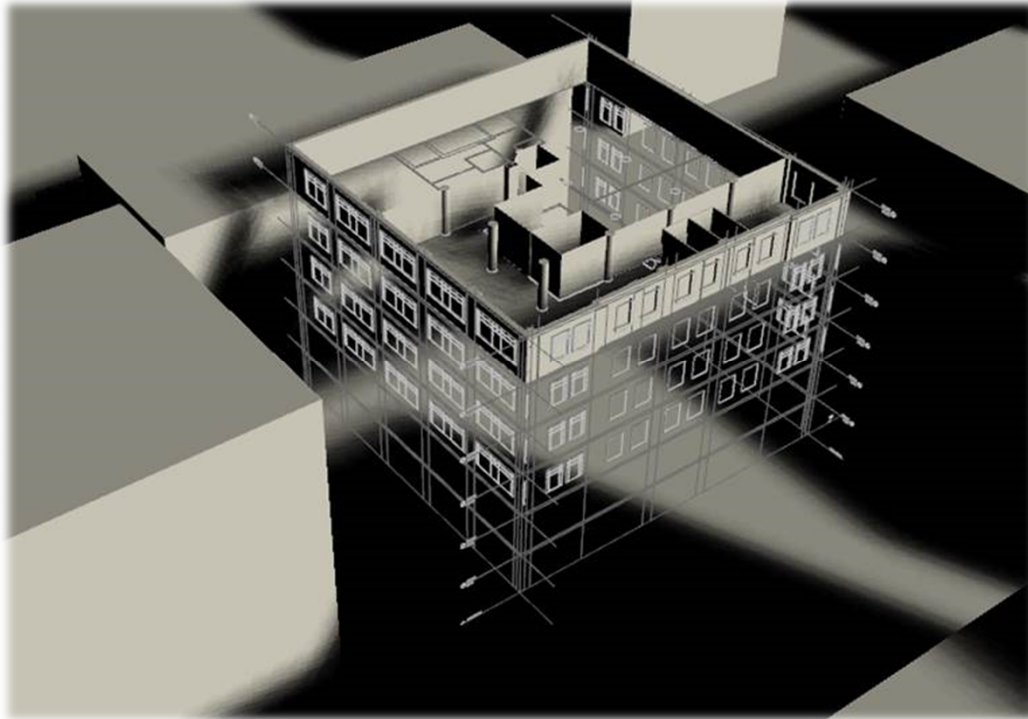


Daylight Simulation & LEED v4

Despite the numerous health and environmental benefits of daylight, daylighting can often hinder occupant comfort and building performance if not designed appropriately.



Join us to learn about the key changes to the daylight credit under LEED v4, factors affecting daylighting, the software available to simulate daylighting, and the results of a case study in an existing office space.

Presented By: **Anna Kazmierska** P.Eng., LEED AP BD+C
WSP | MMM Buildings - Sustainability

November 24, 2016
6:30-7:30pm
Refreshments after

WSP | MMM
Balfour Building- 5th Floor
119 Spadina Ave
Toronto

TTC:
Spadina Streetcar
St Andrews Subway & Walk;

Parking:
 363 Adelaide St W
Camden Street (on street)



The Chartered Institution of
Building Services Engineers



*Upper
Canada
Chapter*

canada@cibse.org
www.cibse.org/canada

RSVP essential